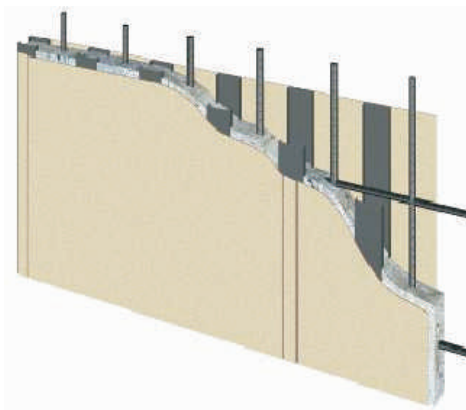


**PRODUCT CODE: EZB 100/75/50
EASY BUILD - WALL PANEL
MAIN COMPONENTS**

Fibre Cement Board, Expanded Polystyrene (EPS) blocks and concrete

APPLICATION

Used for affordable housing, boundary walls & fencing systems. EPS blocks can be used as fillers / reinforcement for compaction.



**PRODUCT CODE: FAW 100 FORM-
A-WALL - LOAD BEARING WALL
MAIN COMPONENTS**

Fibre cement board, expanded polystyrene (EPS) blocks, light gauge steel studs and concrete

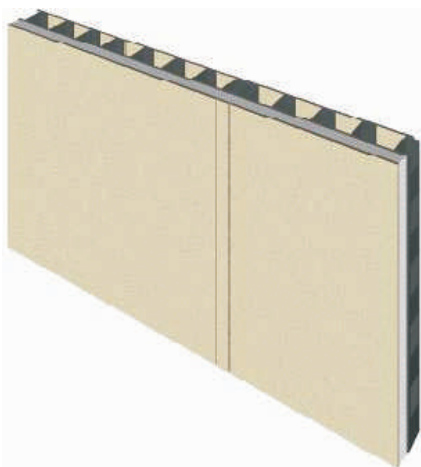
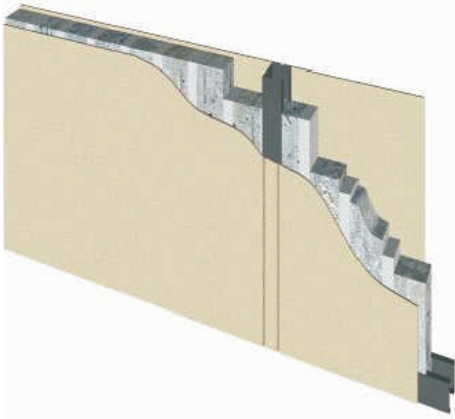
BENEFITS

The FAW system has the flexibility to be filled with other materials depending upon the intended application- hence can be customized to suit any design or architectural requirements. Once filled it can give high impact resistant walls.

The FAW system can be designed to eliminate columns & beams in structures up to 4 storey thereby increasing floor space and yet have a strong & durable building.

APPLICATION

The system is suited for construction of a variety of buildings like residential units, row houses and villas.



PRODUCT CODE: EFW 100 ECO FORM - PARTITION WALL MAIN COMPONENTS

Fibre Cement Board, Expanded Polystyrene (EPS) blocks, Light gauge steel studs and concrete

BENEFITS

Ecoform system can be used where load bearing capabilities are not critical. EPS blocks are used as fillers / reinforcements.

PRODUCT CODE: EZB 100/75/50 EASY BUILD - WALL PANEL MAIN COMPONENTS

Fibre Cement Board, Expanded Polystyrene (EPS) blocks and concrete

APPLICATION

Used for affordable housing, boundary walls & fencing systems. EPS blocks can be used as fillers / reinforcement for compaction.

PRODUCT CODE: TAW 150 THERM-A-WALL MAIN COMPONENTS

Fibre Cement Board, Light Gauge Steel Studs, Concrete and the insulation which is of EPS. The wall is of 6" thickness with insulation on the external side.